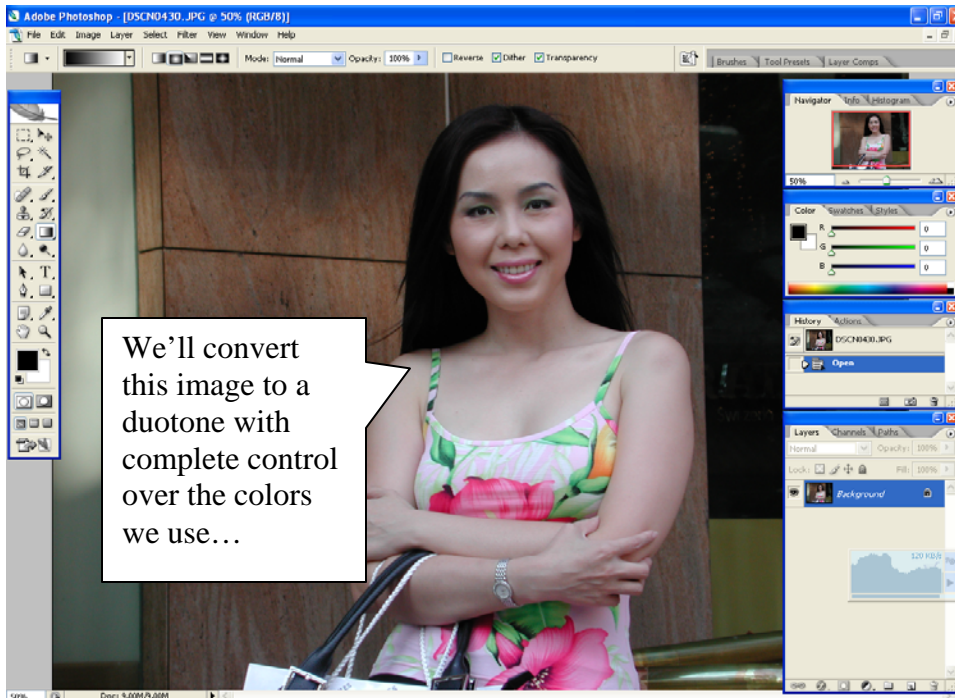


Duotones

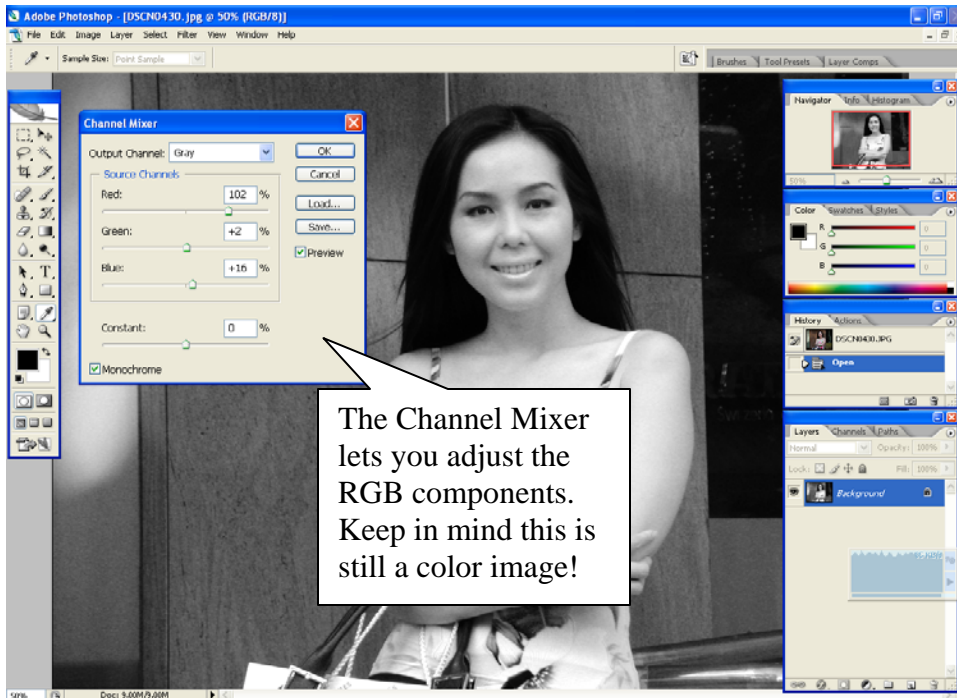
Duotones, as the name implies, are images with two color tones. In its simplest form, duotones can be used to create an image like a black-and-white photograph, but using any color base you want. In its more complex form, a duotone can create an image of contrasting colors to produce a dramatic visual effect.

Let's start with a quick look at how to create simple duotones from a photograph, and we want to produce a two-tone vaguely yellowish image for a particular project.

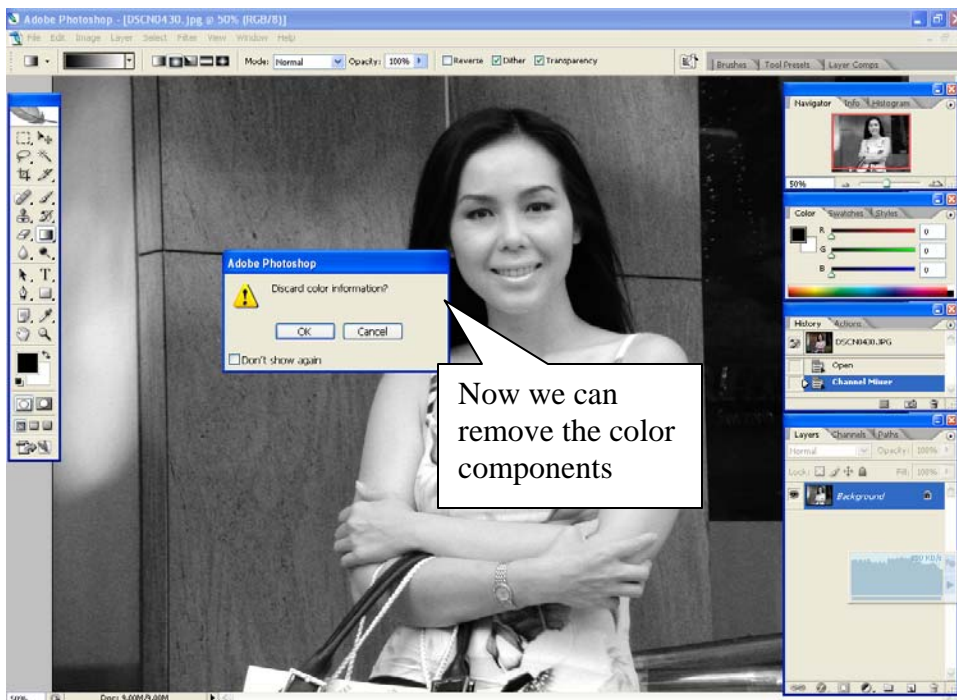


There are several ways to create a duotone in Photoshop, including working with layers (for strongly graphic duotones images) and the channel mixer (for more traditional color-scaled images). In this case, we'll use the latter approach first to show how to accomplish this effect.

After opening your image, open the Channel Mixer (Image > Adjustments > Channel Mixer) and click the Monochrome box. Then, you can use the Red, Green and Blue channel sliders to control the contrast of the image. Keep in mind that the total values for the three color channels need to add up to approximately 100%:

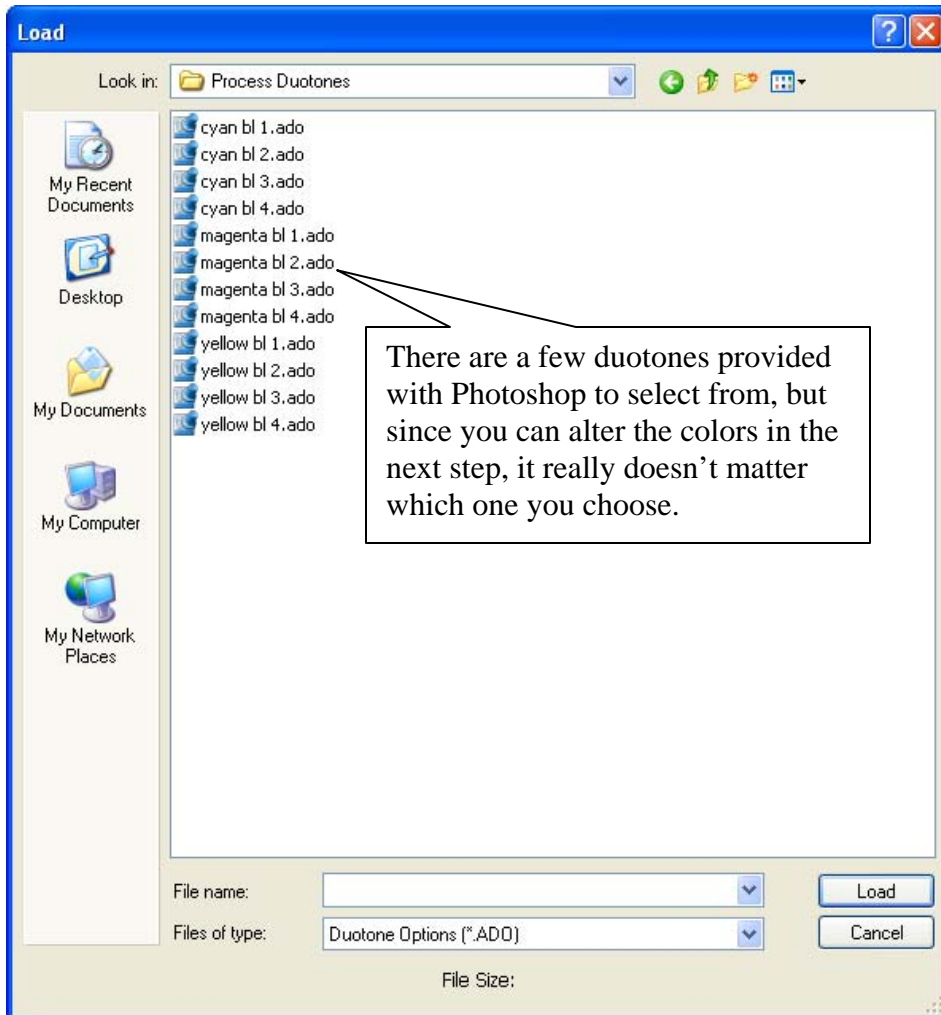


Although it looks like a back-and-white image, it isn't. The image still is in RGB color, so it has to be turned into a true grayscale image using the Image > Mode > Grayscale option, saying "Yes" to discarding the color information in the image:

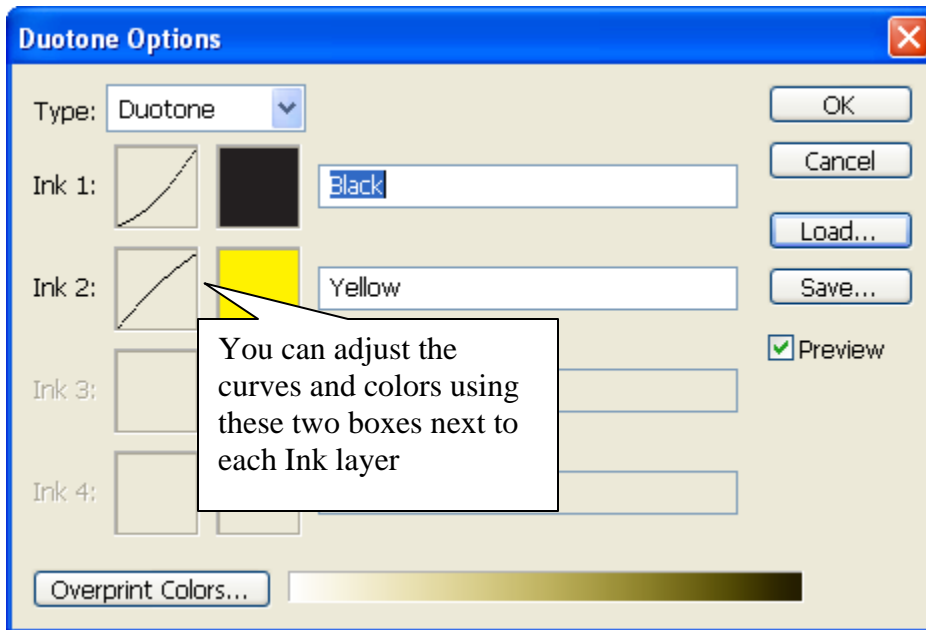


Now, to convert the image into a duotone you need to load a duotone layer. Do this using Image > Mode > Duotone and click on the Load button. This will open a browser with

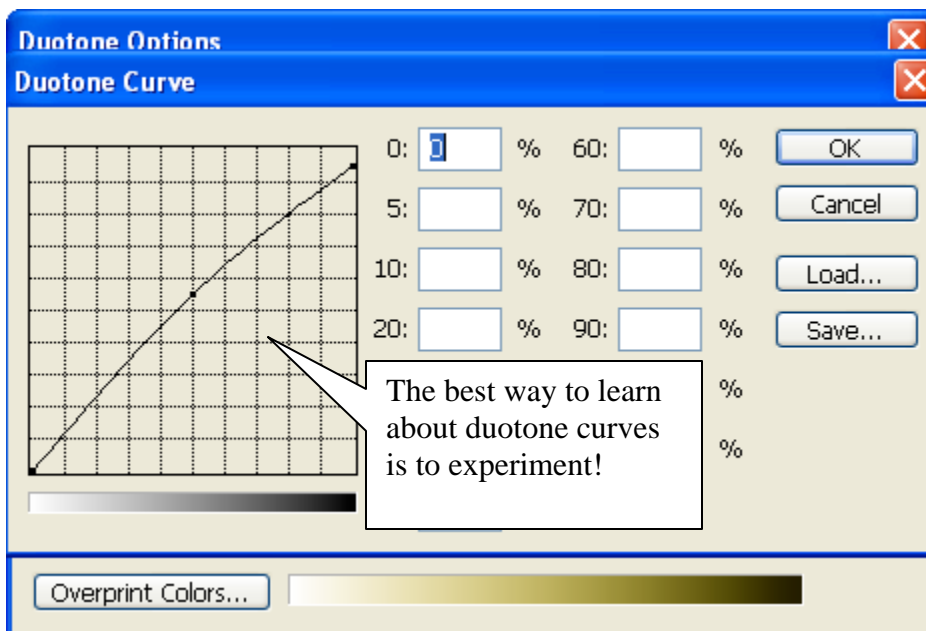
folders for duotone, tritone and quadtones. Open duotones, then open Process Duotones, and select one of the duotones (we'll use "yellow bl 1" for this example):



Once the layer is loaded, the Duotones Options box appears showing two layers:



You can change the exact color by clicking on the color box, which displays a Color Picker dialog allowing you to narrow the colors to your exact requirements. You can also change the color curve by clicking on the curve box next to the ink name, which opens the Color Curve dialog:



After setting the color tones and curves the way you want, you now have a duo-toned image. Using this effect you can get sepia tones, selenium-based tones, and traditional black and white tones to replace your color photographs:

